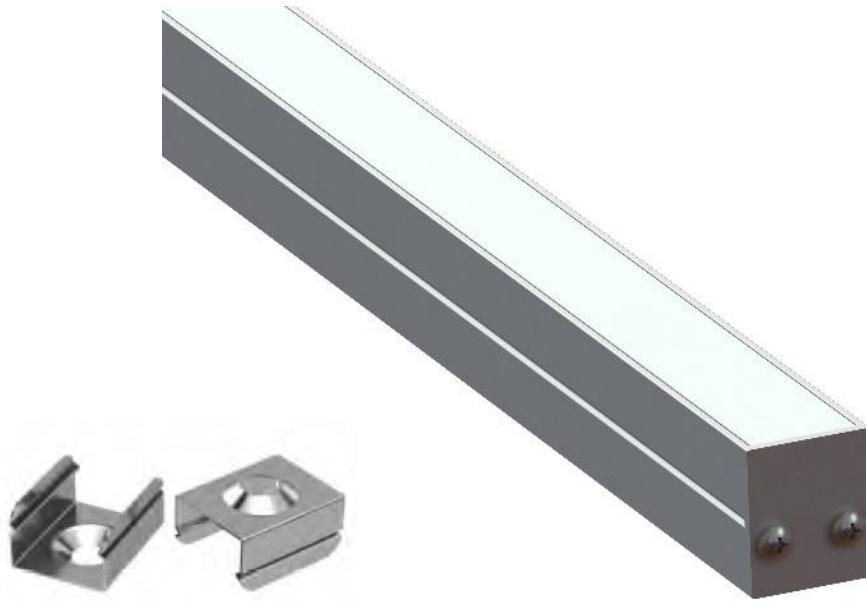


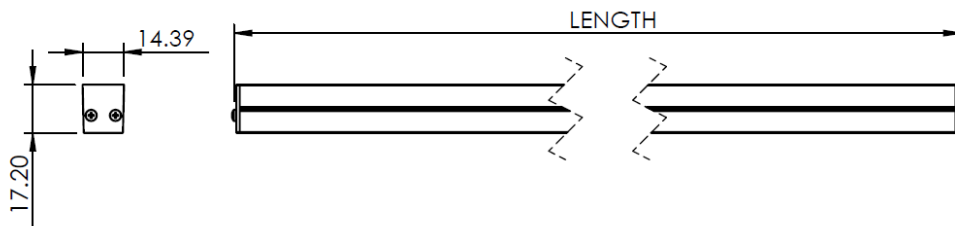
## Technical Specification

LD-14

<b>Product Name:</b>	LD-14
<b>Category:</b>	Linear Diffused Light Line
<b>Description:</b>	24V medium powered diffused LED Light Line in a rectangular surface mount aluminium profile



### Dimensions



Product Code	Min Length (mm)	Length Increments (mm)	Max Length per section (mm)
LD-14	212	98	1486

### Standard Available Lengths (mm)


212, 310, 408, 506, 604, 702, 800, 898, 996, 1094, 1192, 1290, 1388, 1486

## Technical Specification

LD-14

<b>Fitting Material</b>	Anodized aluminium housing, durable polycarbonate diffuser
<b>Available finishes</b>	Anodised aluminium
<b>Optic Type</b>	Polycarbonate diffuser
<b>IP Rating</b>	IP40
<b>Mounting Type</b>	Surface mount
<b>LED Colours (CCT)</b>	3000K, 4000K (others on request)
<b>LED Colour Consistency</b>	<3 SDCM
<b>Colour Rendering Index (CRI)</b>	CRI90 Standard
<b>LED Lifetime</b>	L70 >50,000 hrs at Ta = 25° Celsius
<b>Control Options</b>	non-dim (N), DALI (DALI)
<b>Operating Voltage/ Frequency</b>	24V
<b>Optional Add-ons</b>	Min. 1 hour emergency version available
	Compatibility with specific motion or light sensors
<b>Features</b>	Connectors on each end for interconnecting light lines
	Mounting clips included
<b>Warranty</b>	5 year warranty as per LEDwise standard terms of warranty
<b>Manufacture</b>	Designed and Manufactured in South Africa

### Optical and Electrical Characteristics

Product Code	Power per metre (W/m)	LED Colour Code	Colour Temp (K)	Min CRI	Luminaire Luminous Flux per metre (lm/m) *	Luminaire Luminous Efficacy (lm/W) *	Max Connected Length (m)	Beam Angles
LD-14-212mm	12.0	WW/ NW	3000/ 4000	80	1350	113	5	
LD-14-310mm								
LD-14-408mm								
LD-14-506mm								
LD-14-604mm								
LD-14-702mm								
LD-14-800mm								
LD-14-996mm								
LD-14-1094mm								
LD-14-1192mm								
LD-14-1290mm								
LD-14-1388mm								
LD-14-1486mm								

\* Values accurate to within 10%

NW - Natural White

WW - Warm White

mm

## Technical Specification

LD-14

Product Ordering Code				
Example: <b>LD - 14 - 212mm - 24-14 - 12W/m - NW</b>				
<i>LD-14</i>	<i>212mm</i>	<i>24-14</i>	<i>12W/m</i>	<i>NW (4000K)</i>
Product Code	Length	LED board	W/m	Colour Temp

Document Info
LD-14 Rev 3