

Technical Specification

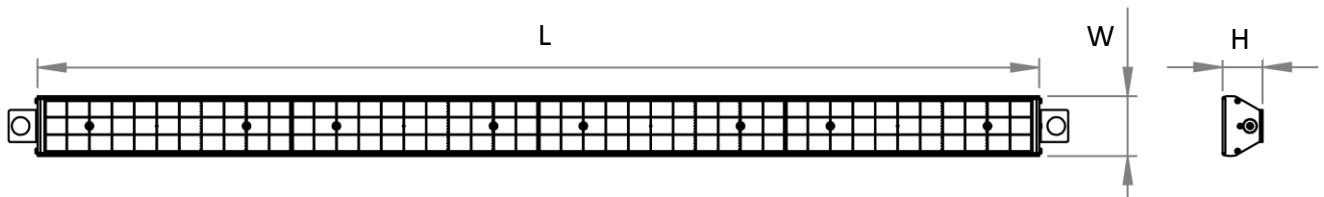
CH-1200

Product Name:	CH-1200
Category:	LED Channel Light
Description:	High efficiency surface mount LED channel light with Osram LEDs and advanced optics



Features:	Available in Natural and Warm White	Applications:	Retail lighting
	Tridonic Driver , Dimmable on request		Parking garages
	High Efficiency Osram LEDs		Replaces 1500mm 1x80W linear fluorescent (Indoor use only)
	Power factor > 0.95		
	Max Power Consumption = 50.6W		
	6495 lumen (Aisle), 6560 lumen (60°,90°)		
	Power saving aisle distribution		
	60° & 90° symmetric distributions for general lighting		
	L70 > 50,000 hrs at Ta = 25° Celsius		
	5 year guarantee on full luminaire		
	System efficacy: 128 lm/W (Aisle), 129lm/W (60°,90°)		
	Fitting available in White, Grey, Black		
	Designed and manufactured in South Africa		
IES Files available on request			
20mm nylon mount or 6mm spring nut for P2000			

Dimensions



Product Code	Length (mm)	Width (mm)	Height (mm)
CH-1200	1160	69	50

Technical Specification

CH-1200

Electrical Characteristics

Parameter	Value	Unit
LED Drive Current	116	mA
Operating Voltage/Frequency	220-240/50-60	V AC/Hz
Dimming	Dimmable on request	-
Power	50.6	W
Power Factor	>0.95	-
Driver Efficiency	>90	%

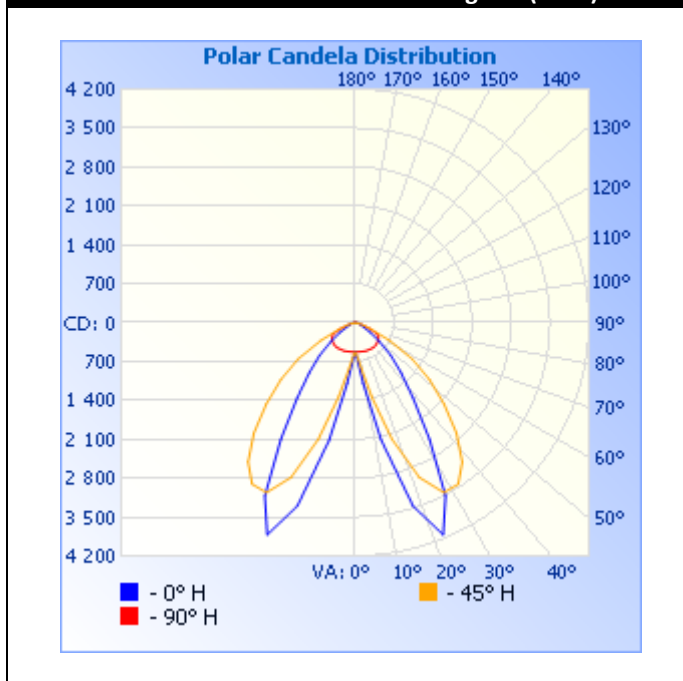
Optical Characteristics

Product Code	LED Colour	Colour Temp (K)	Luminaire Intensity (lm) *	Angle (°)	Min CRI	Fitting Colour
CH-1200	□ NW	4000	6495, 6560	Aisle, 60° & 90°	80	Wt, Gr, Bk
	□ WW	3000	6495, 6560			

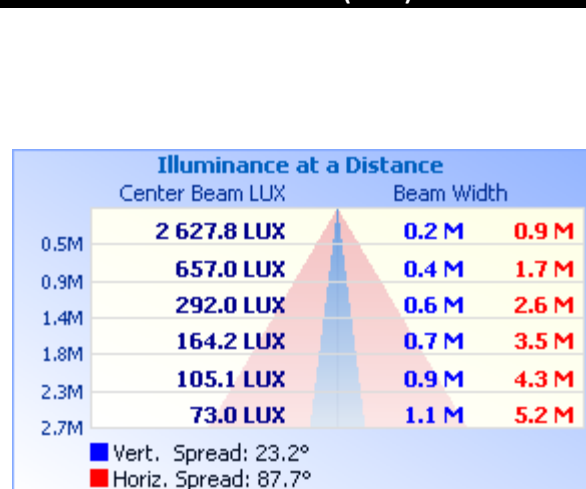
W = Warm White LED Colour
 NW = Natural White LED Colour
 * Values accurate to within 10%

Wt = White
 Gr = Grey
 Bk = Black

Polar Candela Distribution Diagram (Aisle)



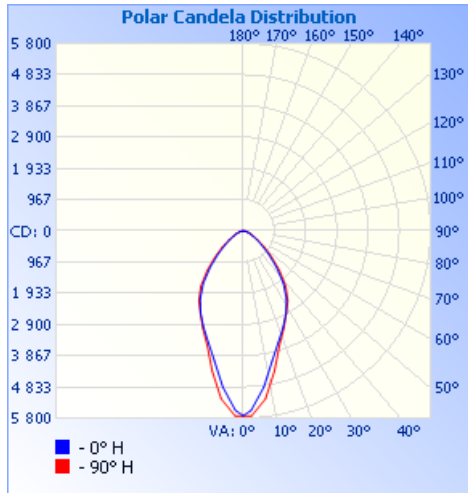
Isolux Plot (Aisle)



Technical Specification

CH-1200

Polar Candela Distribution Diagram (60°)

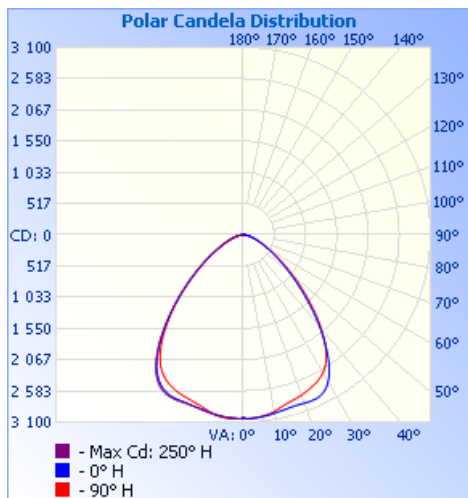


Illumination at a distance (60°)

	Illuminance at a Distance	
	Center Beam LUX	Beam Width
0.5M	28 269.6 LUX	0.5 M 0.5 M
0.9M	7 067.4 LUX	0.9 M 0.9 M
1.4M	3 141.1 LUX	1.4 M 1.4 M
1.8M	1 766.9 LUX	1.9 M 1.9 M
2.3M	1 130.8 LUX	2.3 M 2.4 M
2.7M	785.3 LUX	2.8 M 2.8 M

■ Vert. Spread: 54.8°
■ Horiz. Spread: 55.3°

Polar Candela Distribution Diagram (90°)



Illumination at a distance (90°)

	Illuminance at a Distance	
	Center Beam LUX	Beam Width
0.5M	14 883.9 LUX	0.9 M 0.9 M
0.9M	3 721.0 LUX	1.8 M 1.8 M
1.4M	1 653.8 LUX	2.7 M 2.7 M
1.8M	930.2 LUX	3.6 M 3.6 M
2.3M	595.4 LUX	4.5 M 4.5 M
2.7M	413.4 LUX	5.4 M 5.5 M

■ Vert. Spread: 90.1°
■ Horiz. Spread: 90.5°

Product Ordering Code

Example: CH-1200-NW-Aisle-WT-N

CH-1200	NW	Aisle	WT	N
Product Code	Natural White LED Colour	Distribution	Fitting Colour	Non-Dimmable

Document Info

CH-1200 Rev 3